

— Friends of Chandor Gardens —  
**presents**



**Saturday, June 4, 2022 | 10 am - 4 pm**

*Enjoy a self-guided journey through five unique gardens.  
An exciting glimpse behind the hedges, fences, and gates!*



*Chandor Gardens  
Foundation, Inc.*

**Tickets: \$12 online (in advance) at [www.chandorgardensfoundation.org](http://www.chandorgardensfoundation.org)  
or \$15 at garden gates the day of the event**

---

# Welcome

---

Dear Guest,

Welcome to the Secret Gardens of Parker County Tour 2022.

The Friends of Chandor Gardens, part of Chandor Gardens Foundation Inc.\*, are pleased to present this tour of five unique gardens in Parker County, Texas. These gardens showcase stunning views, garden art, broad range of plants for Texas gardens, and creative landscaping ideas. It is truly an exciting glimpse behind the hedges, fences, and gates!

The gardens can be visited in any order between the times of 10:00 am and 4:00 pm. Make your own itinerary, go at your own pace, and enjoy your time in these beautiful gardens.

We wish to extend a huge thank you to the gracious garden owners who have opened their gardens to us.

We thank our volunteers and sponsors, without whose support we would not be able to have this wonderful event.

Lastly, thank you, valued guest, for your support of this event. Proceeds benefit the enhancement of Chandor Gardens reflecting the artistic vision of Douglas Chandor.

Sincerely,

Committee Members, Secret Gardens of Parker County Tour

Karen Kennedy - Chairperson

Gayle Strangmeyer

Darlene Chapman

Beth Batista

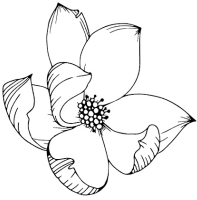
Ann Geer

Eileen Leslie



\* Chandor Gardens Foundation Inc. is a 501 (c)(3) organization.

# Thank You to Our Tour Sponsors



## Magnolia Level Sponsor



**CACTUS JACK RANCH**  
- EST. 1970 -



## Rose Level Sponsors

**KAREN KENNEDY**  
LICENSED TX INSURANCE AGENT

**MEDICARE**  
INSURANCE ★ SOLUTIONS



ANONYMOUS  
*"In honor of all my sisters at Parker County Women's and Newcomers' Club"*



## Lily Level Sponsor



CENTURY 21 Judge Fite Company **JAMIE BODIFORD**



## Daisy Level Sponsors



## In-kind Sponsors



---

## 204 Creekside Drive, Aledo

---



Our home was built in 2003. The first three residents paid little if no attention to the yard or landscape. The third owner did broadcast wildflower seed in the front flower beds and they bloom to this day.

When we purchased the property in 2013 and recognized the potential, we immediately began building flowerbeds and planting grass. My husband builds the beds and I select the flowers/shrubs and their placement. My passion for growing flowers came from my maternal grandmother.

Compost is annually applied to all the flower beds. We have many irises from bulbs which belonged to my husband's mother who lived in North Richland Hills. Several date back to the 1970s. We try to maintain the "natural look" but continue to update the flowers/shrubs.

Half of the backyard is covered with river rock due to lack of sun to grow grass. My husband has built all of the retaining walls and decks. Oak Wilt has affected several of the trees and we have had to remove a few.



Tru Green fertilizes and treats the front yard but my husband maintains the backyard with a high nitrogen fertilizer and broadleaf weed killer. He also aerates the lawn at least once a year. The lawn is a combination of Palmetto St. Augustine, Raleigh St. Augustine, Bermuda and Coastal Bermuda.

Enjoy your visit,  
*Robert and Theresa  
Anderson*



---

## 1214 Forest Park Drive, Weatherford

---



Welcome! Karen and I built this house in 1998 and began with simple sod in the backyard.

In 2001, we put in the pool, playhouse, pool house and fence. John Powell at the original Weatherford Gardens did the initial landscaping immediately surrounding the pool. All that remains of this original installation are the boulders, dry stream bed between the porch and pool, mondo grass, elaeagnus, and western berm.

As you would expect, some plants did better than others and many have changed over the years. A continuous loss of post oaks resulted in dramatic variations in sun exposure resulting in perpetual changes in the position of plants and the type of plants within all the flower beds.

Karen and I built the greenhouse in 2004, added the second dry stream bed in 2007, dug the pond in 2008 and added the rear seating areas and beds in 2009. We borrowed many a pickup truck and are well known at the Home Depot rental counter. The yard art has been sprinkled in along the way. We particularly like the windmill, the seated cherub, and the humpty that drinks wine with us while we enjoy the porch.

It seems now that the tree population is stable as are many of the plants.



Plant replacement is typically reserved for those that suddenly die. As well as the great loss of all of our Pittosporum (35 in all) and all the Wax Leaf Ligustrum (15) due to the “Freeze-pocalypse” in 2021. The Elaeagnus and a few others are still on the mend. Mulch happens in the spring and requires about 45 cubic yards. Drainage has been a problem since the beginning and our latest attempt to solve the problem included French drains under new sitting areas around the pool (I paid for that). We planted new Zoysia in the Spring of 2021.

Plants of interest include:

1. The **giant spider lily** located on the southwest corner of the pool house: They are lush and have beautiful blooms. This particular specimen has been divided numerous times and has given rise to even more spider lilies in both the front and back yards.
2. The **Japanese maples** in front of the playhouse and on the west end of the first dry stream bed: We put them in last year and have high hopes for them. Should you ever want one, Metro Maples ([metromaples.com](http://metromaples.com)) in Fort Worth has an incredible selection and a gorgeous setting.
3. **Yellow cestrum** is in the bed as you enter the backyard. It grows quickly, topping out at about 6' x 6' and is very hardy. Perhaps the best feature is the deer won't eat it. You will likely notice that our front yard is bare. I assure you, it's not for lack of effort or expense. The deer will eat the spider lilies to the ground, eat all the groundcover so that the ground is never covered, and trample all that they didn't eat. The only predictable survivors are cestrum and boxwood. Everything else is at risk.
4. Finally, the **oakleaf hydrangeas**. We can count on these to do universally well. You can see them by the giant pot just east of the pond, and in front of the playhouse by the yew. They're beautiful and given some shade, they always work.

Our yard has been a source of pride and enjoyment for many years. It has also been a consumer of lots of time and resources. Despite all the effort involved, Karen and I enjoy few things more than walking through it in the late afternoon with a glass of wine. We hope you've enjoyed it too. Come back soon and we'll have a glass of cabernet waiting!

Thanks for visiting,  
Tom and Karen Novak

---

## 2000 East Dry Creek Road, Poolville

---



I have always loved working in my yard; watching it bloom and grow year after year. The colors and sweet fragrance is something I look forward to every year. Having my own garden fill my backyard had been a dream of mine and it finally came to fruition with a simple birthday request from my youngest daughter: a tree house. It was around her tree house that my garden vision took place. Inspired by a garden in Fredericksburg, I knew I wanted my own retreat to be filled with meandering paths, cozy nooks to sit and relax, and bubbling water features. My little garden grew into all this and more thanks to David Bergman, of Weatherford Gardens, who took my vision and created a real life secret garden.

In the spring you'll find tulips, daffodils, and poppies. Summer brings feisty zinnias and cosmos. Mums and pumpkins fill every cranny during autumn.

Most of all I love my roses which bloom through every season. When I look out and see their delicate petals playing on the wind or smell their sweet scent I am reminded of my grandmother. I see her soft strong hands working



her own garden making things come to life. It is from her I inherited my love of God and roses. It brings a smile to think that in this small garden of mine I am able to enjoy both the things my grandmother taught me to love.



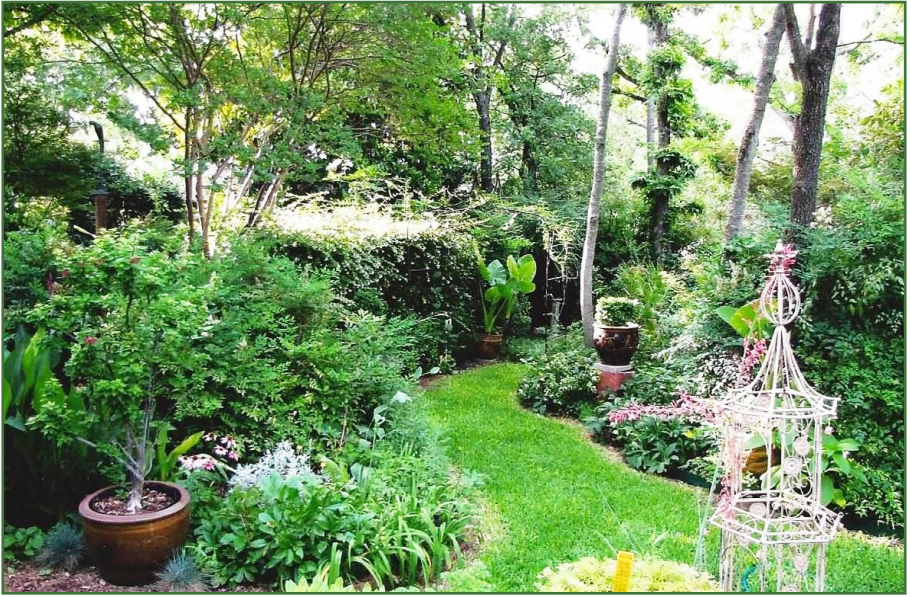
As the years go by and my garden is filled with the memories of birthday parties, Easter egg hunts, talks, and laughs, I hope those who have walked along its paths will leave with the same love and peace it brings to me.

*Jeff and Marie Perkins*

---

*321 Cleveland Avenue, Weatherford*

---



This garden was begun in 1974 when the home, which was built in 1904, was purchased. The owner is a native Oregonian who will tell you that “in Oregon people have gardens, in Texas they have yards, and I wanted a garden.” When his brother visited from Oregon and saw the work needed on the old house, he wanted to know why he had bought it. “Because the yard has good dirt,” was the answer. The hillsides in Parker County are caliche, but this house sits at the bottom of a hill where a couple of feet of topsoil had washed down and accumulated naturally over the millennia—a valuable resource when one wants things to grow.

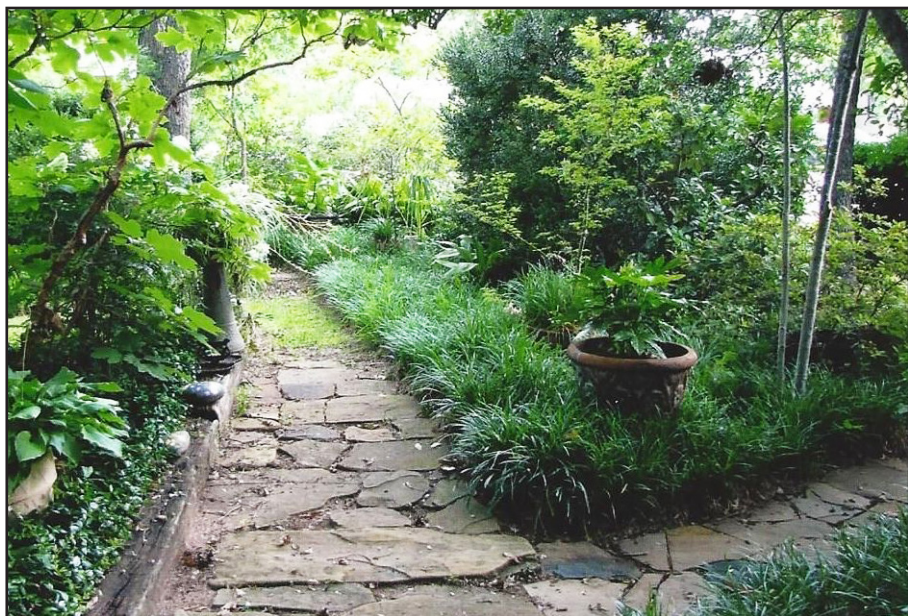
In the beginning there were only three mature oak trees on the west side and two on the east side, and nothing else. The formal entry from the street was the first phase, then flagstone paths from the front down the west and east sides. The west side is planted with hardy materials that require little watering, but provide a wall of greenery which continues around the property. The east side meanders down a path of formal trees and plantings to the back and ends with an antique Thai Spirit House. Beyond, to the back there is a small natural shaped pond, and a rectangular raised pond.





The years have changed the garden into primarily a shade garden with a bit of sun and grass in the back and a couple of patio sitting areas. All and all, it is an eclectic garden with Oriental and English influence, and continues to be a work in progress.

*Harold and Elizabeth Lawrence*



---

711 W. Lee Avenue, Weatherford

---

## Chandor Gardens



Chandor Gardens, a unique 3.5 acre estate garden in the heart of Weatherford, Texas, is the brilliant vision of famed portrait artist Douglas Chandor (1897-1953). Few gardens in the world capture charm and grace on such a personal level with the ability to stir the spirit and sooth the soul. Fewer still are available for the public to explore.

Beginning in 1936 as an artist's dream, Douglas Chandor built the gardens from a cactus covered caliche hillside. He envisioned individual "garden rooms", connected by paths, with hedges and walls enclosing the gardens, and that's exactly what he created and named White Shadows. When questioned about his passion for gardening, Douglas would reply that he was given the talent to paint portraits in order to make the money needed to build his garden. This turned out to be a 16-year labour of love until his untimely death in 1953.

After Douglas' death, his wife Ina changed the name to Chandor Gardens as a tribute to Douglas, and kept it open to the public until her passing in 1978.



For the next 16 years the gardens fell into a state of neglect. In 1994 Melody and Chuck Bradford purchased the property and lovingly restored the home and gardens. The City of Weatherford acquired Chandor Gardens in 2002.

Chandor Gardens captures both the elegance of a formal English garden and the ornate design of ancient Chinese architecture and ornamentation. The Boxwood Garden, the Bowling Green, and the Pixie Pond bring to life English garden features. The Chinese bridge, the Stone of the Immortals, the Chi-Ling Fountain, the Buddha Niche, and the Moon Gate add the Chinese garden flavor.

Today the hardscape of paths, ponds, fountains, waterfalls, and grottoes remains essentially unchanged; the plantings reflect a far more diverse palette of species than was ever utilized by Douglas. This is partially due to a much larger and denser tree canopy than in Douglas' day, which has reduced the amount of sunlight within the garden, and partially due to the necessity to make the garden interesting and colorful year round.



Each season is distinctly different at Chandor Gardens, and each year brings different color schemes, so that garden guests always find something new and different to see. And while the plantings may change often, the spirit remains the same, a reverent testimony to the brilliant Englishman who came to Texas and built a garden.

Chandor Gardens stands today as a world renowned garden listed on the National Register of Historic Places.

## About Chandor Gardens Foundation



*Chandor Gardens*  
Foundation, Inc.

ART / CULTURE / COMMUNITY

Chandor Gardens Foundation, Inc. was formed in 2013 to preserve and protect the historic heritage of Chandor Gardens, and enhancing that heritage, in alliance with the City of Weatherford, through the development of the entire Chandor property in a manner consistent with Douglas Chandor's artistic vision, while making it a center for art, music, horticulture and more.

The Foundation's vision for the future includes developing the adjacent 13.5 acres. The development will comprise of a visitors center with gift shop, expanded parking, an event center for community events, visual and performing arts facilities, nature walking paths, and uniquely designed outdoor spaces. These additions will enhance our rapidly growing community, attract more visitors, capitalize on the history and the beauty Chandor Garden has to offer, and alleviate the burden that constant use places on the existing historic home and garden.

### Friends of Chandor Gardens

Members of the Friends work to preserve the heritage of Chandor Gardens. They train and provide docents, help with seasonal events at Chandor Gardens, and endeavor to engage the community by promoting events that bring speakers, artists, programs, and classes to Chandor Gardens. The Friends also take day trips to museum exhibitions, notable gardens, and more; bring in speakers, and have yearly social gatherings. It is a great opportunity to connect, make friends, and make a difference.

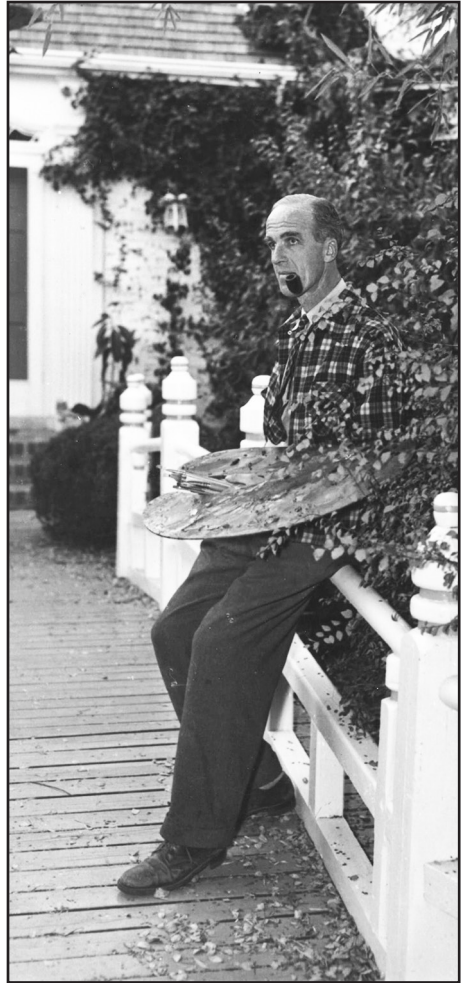


[www.chandorgardensfoundation.org](http://www.chandorgardensfoundation.org)

Visit us on FACEBOOK @ ChandorGardensFoundation

## Douglas Chandor

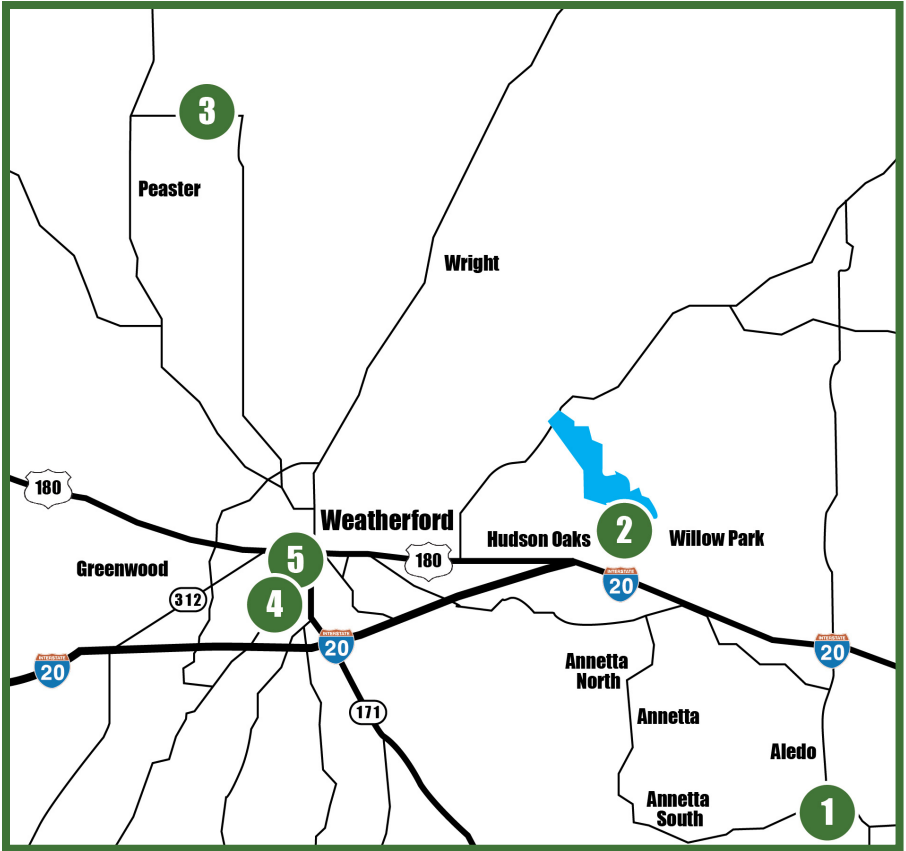
Douglas Chandor was one of the great portrait artists of the 20th Century. Five of his paintings are on display in the Smithsonian's National Portrait Gallery. His portrait of Eleanor Roosevelt is displayed in the White House, and his coronation portrait of Her Majesty, Queen Elizabeth II, graces the British Embassy in Washington, DC. Following their marriage in 1934, Douglas Chandor and Ina Kuteman settled in her hometown of Weatherford Texas. They spent the years between 1936 and 1953 creating what is now known as Chandor Gardens.



Chandor Gardens Foundation Inc. 501 (c)(3)  
A Private Operating Foundation  
P.O. Box 114, Weatherford, Texas 76086

# Secret Gardens of Parker Tour 2022

## Wayfinding Map



### Gardens

### Description Pages

- |   |  |         |
|---|--|---------|
| ① | 204 Creekside Drive, Aledo   | 4 - 5   |
| ② | 1214 Forest Park Drive, Weatherford                                    | 6 - 7   |
| ③ | 2000 East Dry Creek Road, Poolville<br>(11 miles north of Weatherford) | 8 - 9   |
| ④ | 321 Cleveland Avenue, Weatherford                                      | 10 - 11 |
| ⑤ | 711 W. Lee Avenue, Weatherford<br><i>Chandor Gardens</i>               | 12 - 13 |

The gardens can be visited in any order between 10 am and 4 pm.